

## DR Web Ambassador Installation Instructions Version 8.1

Use these instructions when installing Web Ambassador through Internet Explorer.



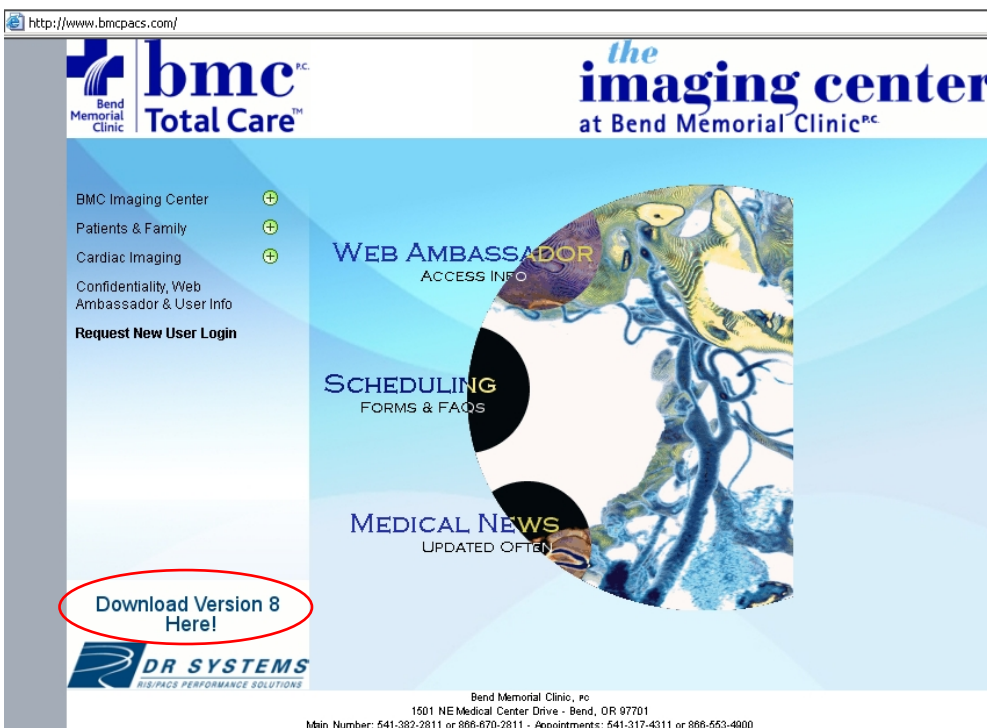
**IMPORTANT:** If you want to keep CMI as your default database, DO NOT complete this step.

In order to properly install both the BMC and CMI data sources, DR requires the C:\DRS folder to be deleted the entire program be uninstalled before installing the new version.

**NOTE:** Any exams or images saved locally will be deleted by this process.

Open Internet Explorer. In the address bar type: [www.bmcpacs.com](http://www.bmcpacs.com). Press enter.

The BMC Imaging Center page will open.

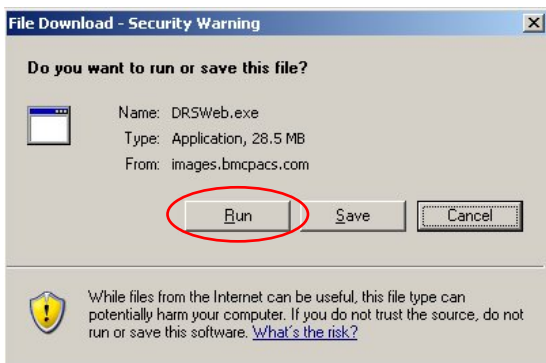


Click on **Download Version 8 Here!**

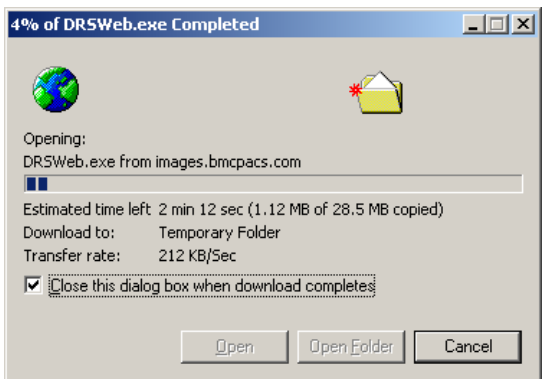


At the login box, enter your DR **User Name** and **Password**.

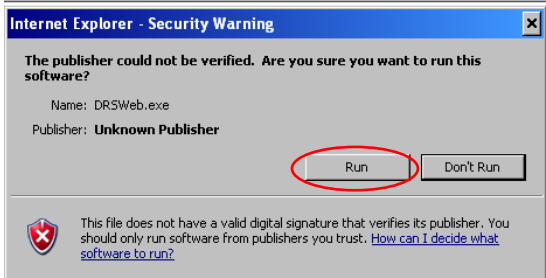
Then, click **OK**.



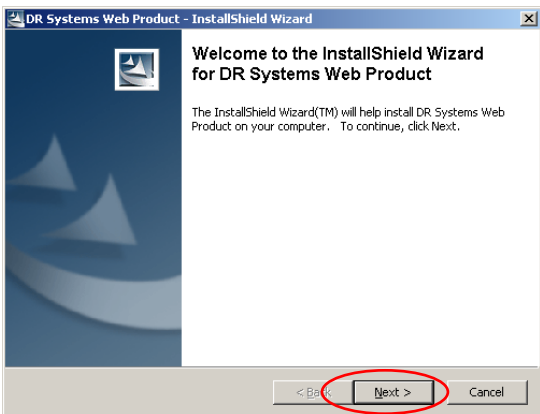
The screen then asks if you want to run or save this file, click **Run**.



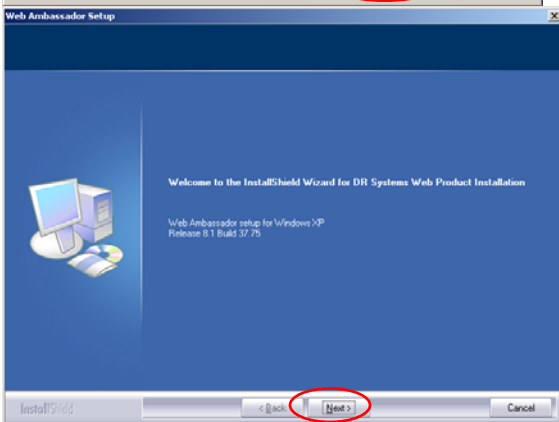
Wait while the updates software downloads to your computer.



At the next Security Warning screen, click **Run** again.

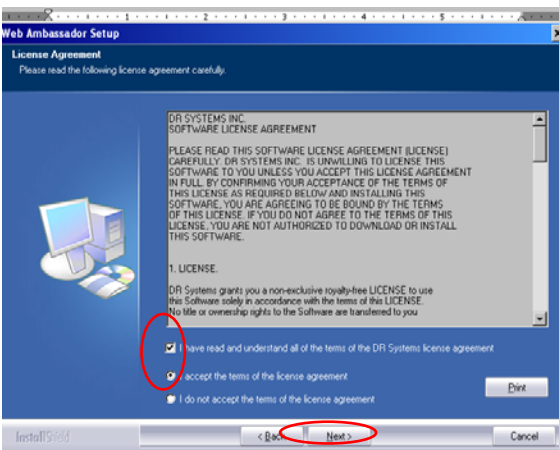


Click **Next** at the Welcome Install Screen



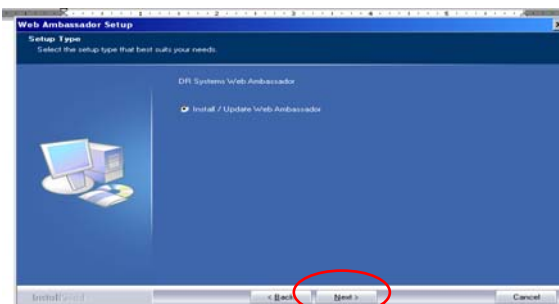
After the files finish extracting, a blue “Welcome to the InstallShield Wizard” screen may open.

If this screen comes up, Click **Next**.

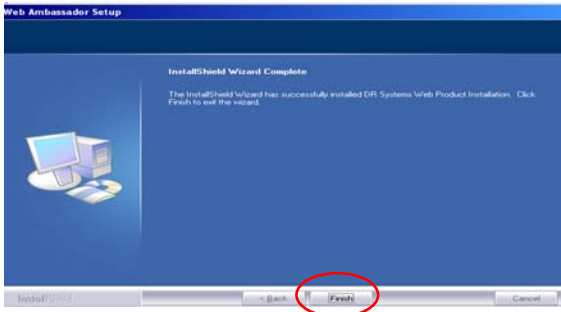


Next, a blue License Agreement screen will pop up. After reviewing the Agreement, check the boxes for ‘**I have read and understand ...**’ and ‘**I accept the terms of the license agreement.**’

Click **Next**.



At the next blue screen, Setup Type, select **Install/Update Web Ambassador** then click **Next**.



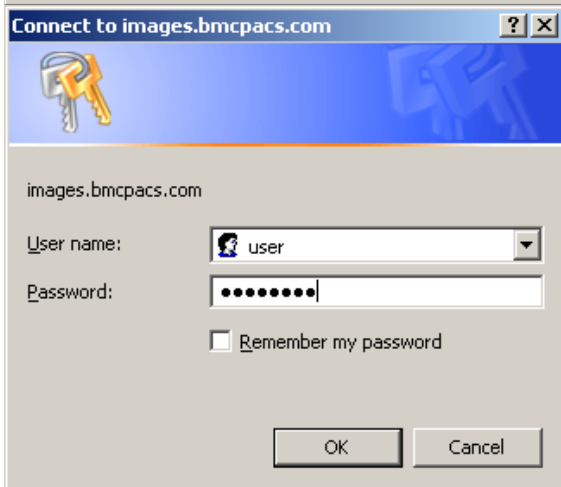
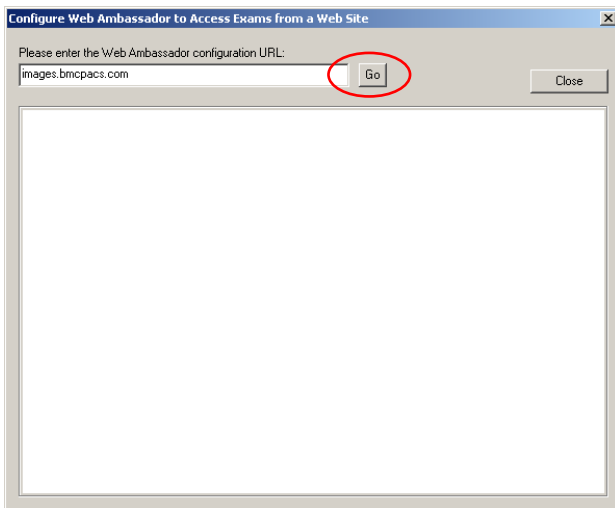
The last screen will be a message that Web Ambassador has been successfully installed.

Click **Finish**.

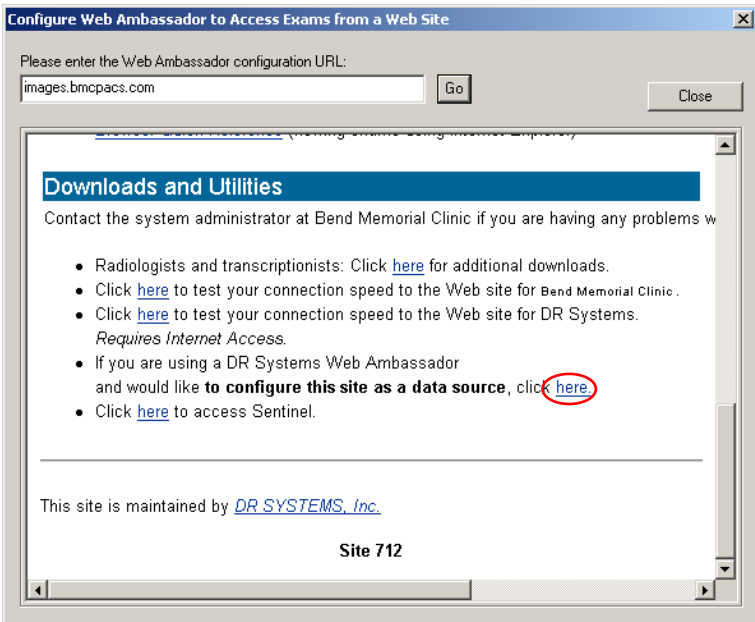
Close any windows that are still open.

Open DR using the icon on your desktop and Click File – Add Web Site Data Source

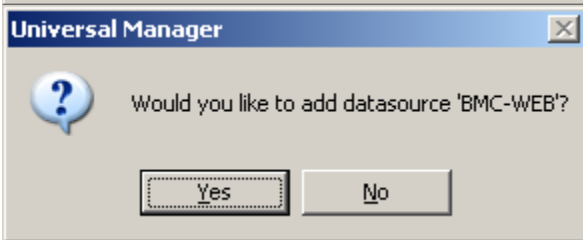
Enter “images.bmcpacs.com” in the field and click the “Go” button.



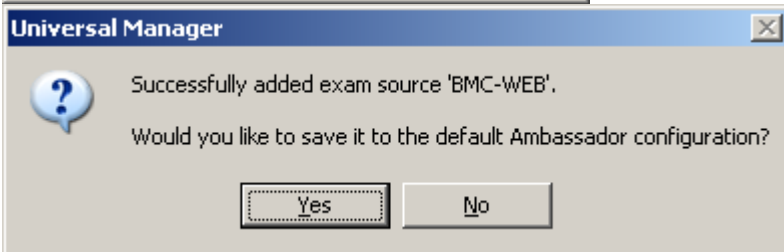
Login using the username you have obtained from BMC.



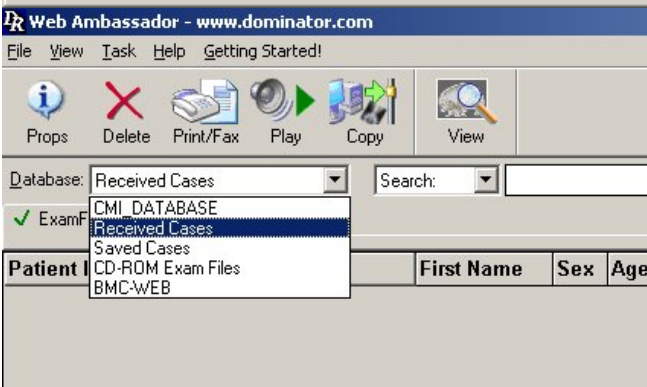
Find:  
“If you are using a DR Systems Web Ambassador and would like to **configure this site as a data source**, click [here](#)” and click the word “[here](#)”.



Click “Yes” to the question “Would you like to add datasource ‘BMC-WEB’”



Click “Yes” to the question “Would you like to save it to the default Ambassador configuration?”



You now have the BMC datasource available in the dropdown labeled as “BMC\_WEB” as seen here.

If you encounter any issues while installing Web Ambassador, please feel free to contact us @ (541)-317-4527 or email [rgibbs@bmctotalcare.com](mailto:rgibbs@bmctotalcare.com).